

ReNu
Fresh Lens Comfort

We could tell you how comfortable
ReNu MultiPlus® keeps patients,
but ACUVUE
silicone hydrogel
wearers say it best.

90% of ACUVUE Advance and Oasys contact lens wearers say
ReNu MultiPlus solution keeps their lenses feeling
comfortable throughout the day.¹

In fact, the overwhelming majority of ACUVUE silicone hydrogel wearers
studied say ReNu MultiPlus solution delivers the comfort they want:

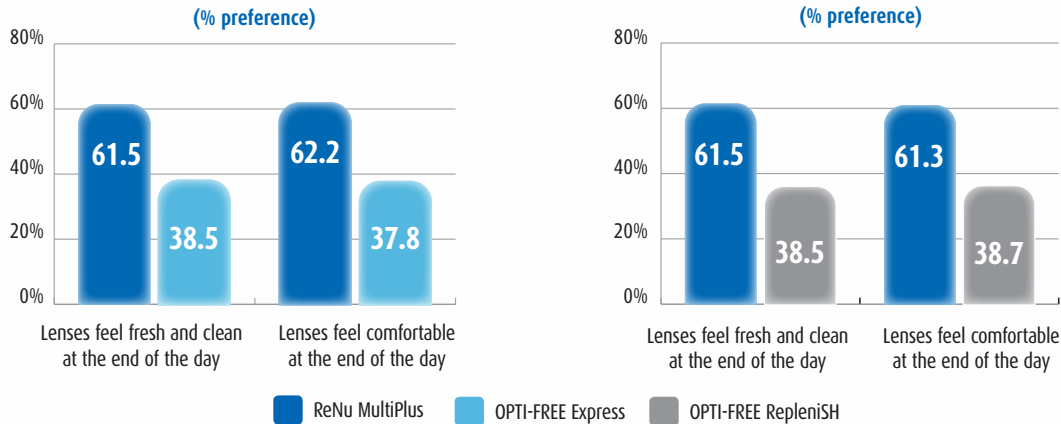
	(% agreement)
Makes my lenses feel comfortable upon insertion	90%
My eyes feel moist throughout the day	81%



Fresh lens comfort – It's what silicone hydrogel patients feel every time they use ReNu MultiPlus.[®]

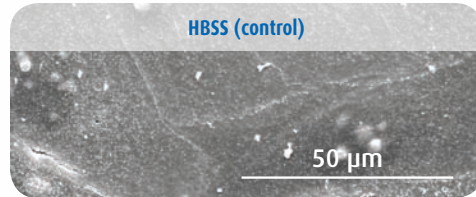
COMFORT PREFERRED BY A RANGE OF SILICONE HYDROGEL PATIENTS²

In a separate study of nearly 400 patients wearing a variety of silicone hydrogel brands, ReNu MultiPlus solution was overwhelmingly preferred to OPTI-FREE solutions for end-of-day comfort:



EXCELLENT BIOCOMPATIBILITY FOR HEALTHY LENS WEAR³

Scanning electron microscope images confirm ReNu MultiPlus solution maintains corneal cell integrity



- Cells demonstrate maintained tight cell junctions



- Cornea appears similar to saline (control)



- Cornea demonstrates erosion of tight cell junctions
- Extensive areas of cell detachment and cell death



- Cornea demonstrates erosion of tight cell junctions
- Large areas of cell detachment, possible cell death

RECOMMEND THE SOLUTION ACUVUE AND OTHER SILICONE HYDROGEL PATIENTS SAY DELIVERS THE COMFORT THEY EXPECT – RENU MULTIPLUS SOLUTION.

¹ Data on file. Bausch & Lomb Incorporated. Studies 475, 497, 501, 543, and 554.

² Results from a multi-site clinical study in which 45 investigators enrolled OPTI-FREE Express subjects and OPTI-FREE RepleniSH subjects who were wearing silicone hydrogel lenses (Bausch & Lomb PureVision[®] contact lenses, CIBA Night & Day, CIBA O₂PTIX, ACUVUE Advance, and ACUVUE Oasys). Subjects (201 OPTI-FREE Express and 187 OPTI-FREE RepleniSH) rated their habitual lens care solution on a variety of performance attributes. Assessments were made using a 10-point scale with 10 representing "totally agree" and 1 representing "totally disagree." After two weeks of using Bausch & Lomb ReNu MultiPlus Multi-Purpose solution with a rub regimen, subjects rated ReNu MultiPlus solution on the same attributes and participated in a forced-choice preference questionnaire. At two weeks, investigators also participated in a forced-choice preference questionnaire. Slit lamp evaluations were conducted at the initial visit and at two weeks (study completion). Statistically significant differences were compared for slit lamp findings Grade 2 or higher.

³ *In vitro* study evaluated the effects of contact lens care solutions on human corneal epithelial cells in culture compared to a control of Hank's Balanced Salt Solution. Monolayer cultures were grown and exposed to each solution for 15 minutes. AlamarBlue was used to measure the respiratory activity of the cells. Additionally, monolayers were grown and evaluated by scanning electron microscopy after being exposed to each solution for 2 hours.